

Saint John's Evangelical Lutheran Church

911 Emergency/GPS Location: 215 St. John Road, Elizabethville, 17023

For US Mail Deliveries: PO Box 270, Berrysburg, 17005-0270

717-362-9519 | pt@stjohnhillchurch.org | www.stjohnhillchurch.org

Our Mission

St. John congregation, responding to the call of the Holy Spirit through the Gospel, unites together to preach and teach the Word, administer the sacraments, and carry out God's mission. With God's guidance and grace, we strive to boldly proclaim by word and action the reconciling Gospel of Jesus: Working together for justice and peace, and caring for those in need in our community and world. We invite everyone to join us wherever you are on your faith journey. Adopted December 8, 2013

Serving Today

The Rev. Thomas G. Bruner, Jr.	Pastor
Laurie Little	Young Christians Minister
Judy Ferree	Organist
Ty Troutman	Senior Choir Director
Henry Family	Greeters
Joshua Paul	Lector/Council President
Christie Kahler	Lead Usher

For the month of June, the **Celebrate Inserts** are presented by Mike and Carol Hubler in celebration of the birthdays of Esther, Shelley, Carol and June and for all things great and wonderful, the Lord God made them all, the **Tree 4 Hope** is sponsored by Tim and Lori Motter in honor of the marriage of Nicholas Motter and Abigail Francisco on June 8, 2024, and our support of one pastor for one month in the **Konde Diocese of the Evangelical Lutheran Church in Tanzania** is sponsored by Kim & Barry Williard Jr. in memory of her father, Paul "Topper" Welker.

Welcome to all who are worshipping with us this morning. If you are a visitor, please sign our guest book in the foyer and please worship with us again and join in other congregational family activities!

Outdoor Worship Liturgy

God Gathers Us in Prayer and Praise

Announcements

Keyboard Prelude and Silent Prayer

*Confession and Forgiveness:

P: Blessed be the holy Trinity, one God, the creator of wind and rain, field and ocean, the bread of life coming down from above, the power at work within us and this world.

C: **AMEN.**

P: Before God and in the company of our sisters and brothers, let us confess our sin.
(brief silence follows)

P: God and Father of all,

C: **WE CONFESS THAT WE HAVE SINNED AGAINST YOU IN THOUGHT, WORD, AND DEED. WE HAVE THOUGHT BETTER OF OURSELVES THAN OTHERS. WE HAVE TOLD LIES, SAID HURTFUL THINGS, ACTED IN WAYS WE WISH WE COULD**

TAKE BACK, AND LOOKED THE OTHER WAY WHEN ACTION WAS NEEDED. IN YOUR MERCY, O GOD, FORGIVE US, CLEANSE US, AND HEAL US, FOR THE SAKE OF JESUS, OUR SAVIOR. AMEN.

P: If anyone is in Christ, there is a new creation: everything old has passed away; everything has become new! In Christ, we are a new creation: our sins are taken away and we are made new. Let us be kind to one another, tenderhearted, forgiving one another, as God in Christ has forgiven us.

C: **AMEN.**

*Opening Hymn **LBW** #365 "Built on a Rock"

*Greeting:

P: From God our Father and the Lord Jesus Christ, grace and peace be with you all.

C: **AND ALSO WITH YOU.**

*Prayer of the Day

We Hear God's Word

First Reading: Genesis 3:8-15

Psalm: 130

Second Reading: II Corinthians 4:13-5:1

*Gospel: Mark 3:20-35

Response after the reading is announced: **GLORY TO YOU, O LORD.**

Response after the reading is concluded: **PRAISE TO YOU, O CHRIST.**

Sermon

We Respond to All That God Gives Us

*A New Creed:

**WE ARE NOT ALONE,
WE LIVE IN GOD'S WORLD.**

**WE BELIEVE IN GOD:
WHO HAS CREATED AND IS CREATING,
WHO HAS COME IN JESUS,
THE WORD MADE FLESH,
TO RECONCILE AND MAKE NEW,
WHO WORKS IN US AND OTHERS
BY THE SPIRIT.**

WE TRUST IN GOD.

**WE ARE CALLED TO BE THE CHURCH:
TO CELEBRATE GOD'S PRESENCE,
TO LIVE WITH RESPECT IN CREATION,
TO LOVE AND SERVE OTHERS,
TO SEEK JUSTICE AND RESIST EVIL,
TO PROCLAIM JESUS, CRUCIFIED AND RISEN,
OUR JUDGE AND OUR HOPE.**

**IN LIFE, IN DEATH, IN LIFE BEYOND DEATH,
GOD IS WITH US.**

**WE ARE NOT ALONE.
THANKS BE TO GOD.**

*Prayers of the Church

*Our Lord's Prayer:

**OUR FATHER, WHO ART IN HEAVEN, HALLOWED BE THY NAME, THY KINGDOM
COME, THY WILL BE DONE, ON EARTH AS IT IS IN HEAVEN.**

**GIVE US THIS DAY OUR DAILY BREAD; AND FORGIVE US OUR TRESPASSES, AS WE
FORGIVE THOSE WHO TRESPASS AGAINST US; AND LEAD US NOT INTO
TEMPTATION, BUT DELIVER US FROM EVIL.**

**FOR THINE IS THE KINGDOM, AND THE POWER, AND THE GLORY, FOREVER AND
EVER. AMEN.**

God Sends Us to Share the Good News

*Blessing:

P: The Lord bless us and keep us. The Lord's face shine upon us with grace and mercy.
The Lord look upon us with favor and give us peace.

C: **AMEN**

*Dismissal:

P: Go in peace. Proclaim the good news

C: **WE WILL. THANKS BE TO GOD!**

*Closing Hymn **LBW** #229 "A Mighty Fortress Is Our God"

*Keyboard Postlude and We Depart to Serve

* * * * *

* Please stand, if able to do so.

Today, June 9

Day of Prayer for Peace with Justice, Beginning in the Middle East

8:45am Sunday Morning Bible Study (In-Person)
9:30am SONDay Celebration with Miss Laurie (In-Person)
9:30am **Outdoor Worship** in the Pavilion (In-Person and On Zoom)

Monday, June 10

8-9:30am Pastor Tom's Office Hours
8am Food Preparation for Annual Strawberry Festival
5:30pm Strawberry Preparation for Tuesday Pie Making

Tuesday, June 11

Barnabas, Apostle

8-9:30am Pastor Tom's Office Hours
6:30am Preparation of Strawberry Pies
6pm Strawberry Preparation for Festival Day
6pm Preparation and Set-Up of Pavilion

Whole strawberry pies will once again be available for purchase and pick up by congregational family members on Tuesday evening. Credit card purchases can be made between 5:00 and 6:30 P.M. only, while cash/check purchases can be made at any time that evening. New this year – we will also have 9-inch pie crusts for sale and pickup that evening (as a result of having to purchase more crusts than we actually needed for pie making). They come in packs of 2 for \$2.

Wednesday, June 12 – Annual Strawberry Festival

8am Final Preparation for Annual Strawberry Festival
12-7pm Open to the Public!!
1-1:10pm Entertainment by **The Strawberry Jammers**, led by Miss Laurie
1:10 – 1:30pm Entertainment by **Caroline DeSoto**
1:30 – 3pm Entertainment by **Brad Crum Appearing as Elvis**
3:30pm Entertainment by **Kenny Shadle**

If you are planning to park your car for the entire day, please plan to use one of two preferred parking options available this year. As in prior years, you are welcome to park below (down the hill to the north side of) the pavilion or new this year – you can be parked by our Parking Team along St. John Road to the east of the pavilion, but you need to arrive no later than 10:30 A.M. and check in with Matt Williard to take advantage of this option.

Thursday, June 13

8am-12pm Pastor Tom's Office Hours

Friday, June 14

8-9:30am Pastor Tom's Office Hours

Saturday, June 15

Deadline to submit items for inclusion in the combined July/August "St. John's Epistle".

Pastor Tom's Weekly Day Off

Next Sunday, June 16

Fourth Sunday after Pentecost
8:45am Sunday Morning Bible Study (In-Person)
9:30am SONDay Celebration with Miss Laurie (In-Person)
9:30am **Outdoor Worship** in the Pavilion (In-Person and On Zoom) **(We will have approximately 100 metal chairs set up in advance, but anyone who would prefer to do so is also welcome to bring along their own comfortable camp chairs to create their own seating. Please keep in mind that this will be an outdoor service on a Hill known for its cool breezes – be sure to dress warmly and bring a sweater or jacket!)**

Our multi-talented Youth Group has created a brand-new Server Training Video for all new Strawberry Festival Servers (as well as veterans desiring to get just a bit of a refresher after a year away)! Just 8 minutes in length (including bloopers – that's right, bloopers!) it is available on YouTube at the following direct link: <https://youtu.be/!Ad4zilpo5A>

Since it covers a whole lot of frequently asked questions, it actually would be a good idea for everyone who has any contact with our guests on June 12 to give it a view. A BIG THANK YOU to the production crew!

The wrap-up meeting for our Annual Strawberry Festival will be held on Tuesday, June 25, at 6:15 P.M. at the church – all interested folks are invited to attend!

For the month of July, sponsors are needed for 1. our July 7 altar flowers (\$35), our providing of 2. one month of a **Konde Diocese (in Tanzania, Africa) Pastors Salary** (\$50/month) and 3. one month of our support for the work of **Tree 4 Hope** (\$50/month). To sponsor any of these ministries in honor or in memory of loved ones or events, please either sign up in person in the foyer or, if easier, please feel free to call or email Pastor Tom, who will take care of it for you.

To make sure that our blessed prayer shawls get to as many folks in need of God's healing touch as possible, it is now possible for anyone from the St. John congregational family to deliver a prayer shawl to a person who is known to them to be hurting in body, mind, and/or spirit, and who would be blessed by receiving one of our shawls. To obtain a shawl, please first contact Pastor Tom, who will help you with the process. **(Please bear in mind that it is the intention of the prayer shawl ministry that each person receive just one shawl "for life", to be used in whatever time(s) of brokenness they may face.)**

Amy Gehring continues to collect donations to Bethesda Mobile Mission. Gently used, unstained, clean blankets and casual clothing for MEN & WOMEN are always a need since the homeless do not typically have the ability to launder items. Sleeping bags, tarps, mats, backpacks/large totes or bags are also useful. New underwear, socks, batteries (all sizes), toilet paper, candles, and matches are highly valued. Those served by the Bethesda Mobile Mission also need TRAVEL SIZE toiletries—don't leave those small bottles behind when you are traveling. Pass them along to Amy. Please contact Amy at church with any questions or call her at 1-717-503-7623. Donations can be placed in the designated hampers in the foyer.

Hospitalized/Residing in Senior Living/Dealing with Acute Illness:

- **Grant Barder** – Recovering at Home from 5/29 Ankle Surgery
- **Cindy Carr** – At Home, Undergoing Treatment for Autoimmune Disorder and Resulting Organ Damage
- **Judy Cheatham** – Rm. #47B, Complete Care at Annapolis, 900 Van Buren Street, Annapolis, MD 21403
- **Cora Mace** – Rm. #3647, Roosevelt 3, Masonic Health Care Center, 600 Freemason Drive, Elizabethtown, 17022
- **Joyce Matter** – On Hospice Care at: Rm. #128, Viva Senior Living at Harrisburg, 150 Kempton Avenue, Harrisburg, 17111
- **Robert Schaffer** – Rm. #125, Polk Personal Care Center, 301 North St., Millersburg
- **Steven Schlegel** – Home, Receiving Outpatient Chemotherapy Treatments and Important Scans Coming Up June 12

Our Faith Active in Worship – June 2, 2024

Current – Approx. Budget Goal	\$3,112
Current – Offerings Received	\$2,151
Benevolence – Offerings Received	\$102
Improvement – Offerings Received	\$97
Children & Youth Ministry – Offerings Received	\$356
Total Attendance	Zoom – 9, In Person – 66

Today, June 9

Day of Prayer for Peace with Justice, Beginning in the Middle East

8:45am Sunday Morning Bible Study (In-Person)
9:30am SONday Celebration with Miss Laurie (In-Person)
9:30am **Outdoor Worship** in the Pavilion (In-Person and On Zoom)

Monday, June 10

8-9:30am Pastor Tom's Office Hours
8am Food Preparation for Annual Strawberry Festival
5:30pm Strawberry Preparation for Tuesday Pie Making

Tuesday, June 11

Barnabas, Apostle

8-9:30am Pastor Tom's Office Hours
6:30am Preparation of Strawberry Pies
6pm Strawberry Preparation for Festival Day
6pm Preparation and Set-Up of Pavilion

Whole strawberry pies will once again be available for purchase and pick up by congregational family members on Tuesday evening. Credit card purchases can be made between 5:00 and 6:30 P.M. only, while cash/check purchases can be made at any time that evening. New this year – we will also have 9-inch pie crusts for sale and pickup that evening (as a result of having to purchase more crusts than we actually needed for pie making). They come in packs of 2 for \$2.

Wednesday, June 12 – Annual Strawberry Festival

8am Final Preparation for Annual Strawberry Festival
12-7pm Open to the Public!!
1-1:10pm Entertainment by **The Strawberry Jammers**, led by Miss Laurie
1:10 – 1:30pm Entertainment by **Caroline DeSoto**
1:30 – 3pm Entertainment by **Brad Crum Appearing as Elvis**
3:30pm Entertainment by **Kenny Shadle**

If you are planning to park your car for the entire day, please plan to use one of two preferred parking options available this year. As in prior years, you are welcome to park below (down the hill to the north side of) the pavilion or new this year – you can be parked by our Parking Team along St. John Road to the east of the pavilion, but you need to arrive no later than 10:30 A.M. and check in with Matt Williard to take advantage of this option.

Thursday, June 13

8am-12pm Pastor Tom's Office Hours

Friday, June 14

8-9:30am Pastor Tom's Office Hours

Saturday, June 15

Deadline to submit items for inclusion in the combined July/August "St. John's Epistle".

Pastor Tom's Weekly Day Off

Next Sunday, June 16

Fourth Sunday after Pentecost

8:45am Sunday Morning Bible Study (In-Person)
9:30am SONday Celebration with Miss Laurie (In-Person)
9:30am **Outdoor Worship** in the Pavilion (In-Person and On Zoom) **(We will have approximately 100 metal chairs set up in advance, but anyone who would prefer to do so is also welcome to bring along their own comfortable camp chairs to create their own seating. Please keep in mind that this will be an outdoor service on a Hill known for its cool breezes – be sure to dress warmly and bring a sweater or jacket!)**

Our multi-talented Youth Group has created a brand-new Server Training Video for all new Strawberry Festival Servers (as well as veterans desiring to get just a bit of a refresher after a year away)! Just 8 minutes in length (including bloopers – that's right, bloopers!) it is available on YouTube at the following direct link: <https://youtu.be/!Ad4zilpo5A>

Since it covers a whole lot of frequently asked questions, it actually would be a good idea for everyone who has any contact with our guests on June 12 to give it a view. A BIG THANK YOU to the production crew!

The wrap-up meeting for our Annual Strawberry Festival will be held on Tuesday, June 25, at 6:15 P.M. at the church – all interested folks are invited to attend!

For the month of July, sponsors are needed for 1. our July 7 altar flowers (\$35), our providing of 2. one month of a **Konde Diocese (in Tanzania, Africa) Pastors Salary** (\$50/month) and 3. one month of our support for the work of **Tree 4 Hope** (\$50/month). To sponsor any of these ministries in honor or in memory of loved ones or events, please either sign up in person in the foyer or, if easier, please feel free to call or email Pastor Tom, who will take care of it for you.

To make sure that our blessed prayer shawls get to as many folks in need of God's healing touch as possible, it is now possible for anyone from the St. John congregational family to deliver a prayer shawl to a person who is known to them to be hurting in body, mind, and/or spirit, and who would be blessed by receiving one of our shawls. To obtain a shawl, please first contact Pastor Tom, who will help you with the process. **(Please bear in mind that it is the intention of the prayer shawl ministry that each person receive just one shawl "for life", to be used in whatever time(s) of brokenness they may face.)**

Amy Gehring continues to collect donations to Bethesda Mobile Mission. Gently used, unstained, clean blankets and casual clothing for MEN & WOMEN are always a need since the homeless do not typically have the ability to launder items. Sleeping bags, tarps, mats, backpacks/large totes or bags are also useful. New underwear, socks, batteries (all sizes), toilet paper, candles, and matches are highly valued. Those served by the Bethesda Mobile Mission also need TRAVEL SIZE toiletries—don't leave those small bottles behind when you are traveling. Pass them along to Amy. Please contact Amy at church with any questions or call her at 1-717-503-7623. Donations can be placed in the designated hampers in the foyer.

Hospitalized/Residing in Senior Living/Dealing with Acute Illness:

- **Grant Barder** – Recovering at Home from 5/29 Ankle Surgery
- **Cindy Carr** – At Home, Undergoing Treatment for Autoimmune Disorder and Resulting Organ Damage
- **Judy Cheatham** – Rm. #47B, Complete Care at Annapolis, 900 Van Buren Street, Annapolis, MD 21403
- **Cora Mace** – Rm. #3647, Roosevelt 3, Masonic Health Care Center, 600 Freemason Drive, Elizabethtown, 17022
- **Joyce Matter** – On Hospice Care at: Rm. #128, Viva Senior Living at Harrisburg, 150 Kempton Avenue, Harrisburg, 17111
- **Robert Schaffer** – Rm. #125, Polk Personal Care Center, 301 North St., Millersburg
- **Steven Schlegel** – Home, Receiving Outpatient Chemotherapy Treatments and Important Scans Coming Up June 12

Our Faith Active in Worship – June 2, 2024

Current – Approx. Budget Goal	\$3,112
Current – Offerings Received	\$2,151
Benevolence – Offerings Received	\$102
Improvement – Offerings Received	\$97
Children & Youth Ministry – Offerings Received	\$356
Total Attendance	Zoom – 9, In Person – 66

“Built on a Rock”

ELW 652 / LBW 365

1 Built on a rock the church shall stand, e - ven when stee - ples are
 2 Sure - ly, in tem - ples made with hands God the Most High is not
 3 Christ builds a house of liv - ing stones: we are his own hab - i -
 4 Yet in this house, an earth - ly frame, Je - sus the chil - dren is

fall - ing; crum - bled have spires in ev - 'ry land, bells still are
 dwell - ing— high in the heav'ns his tem - ple stands, all earth - ly
 ta - tion; he fills our hearts, his hum - ble thrones, grant - ing us
 bless - ing; hith - er we come to praise his name, faith in our

chim - ing and call - ing— call - ing the young and old to rest, call - ing the
 tem - ples ex - cel - ling. Yet God who dwells in heav'n a - bove deigns to a -
 life and sal - va - tion. Where two or three will seek his face, he in their
 Sav - ior con - fess - ing. Je - sus to us his Spir - it sent, mak - ing with

souls of those dis - tressed, long - ing for life ev - er - last - ing.
 bide with us in love, mak - ing our bod - ies his tem - ple.
 midst will show his grace, bless - ings up - on them be - stow - ing.
 us his cov - e - nant, grant - ing his chil - dren the king - dom.

5 Through all the passing years, O Lord,
 grant that, when church bells are ringing,
 many may come to hear your Word,
 who here this promise is bringing:
 “I know my own, my own know me;
 you, not the world, my face shall see;
 my peace I leave with you. Amen.”



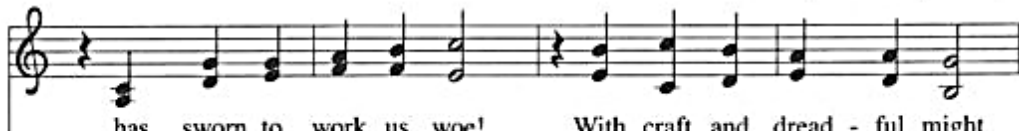
1 A might - y for - tress is our God, a sword and shield vic -
 2 No strength of ours can match his might! We would be lost, re -
 3 Though hordes of dev - ils fill the land all threat - 'ning to de -
 4 God's Word for - ev - er shall a - bide, no thanks to foes, who



to - rious; he breaks the cruel op - pres - sor's rod and
 ject - ed. But now a cham - pion comes to fight, whom
 your us, we trem - ble not, un - moved we stand; they
 fear it; for God him - self fights by our side with



wins sal - va - tion glo - rious. The old sa - tan - ic foe
 God him - self e - lect - ed. You ask who this may be?
 can - not o - ver - pow'r us. Let this world's ty - rant rage;
 weap - ons of the Spir - it. Were they to take our house,



has sworn to work us woe! With craft and dread - ful might
 The Lord of hosts is he! Christ Je - sus, might - y Lord,
 in bat - tle we'll en - gage! His might is doomed to fail;
 goods, hon - or, child, or spouse, though life be wrenched a - way,



he arms him - self to fight. On earth he has no e - qual.
 God's on - ly Son, a - dored. He holds the field vic - to - rious.
 God's judg - ment must pre - vail! One lit - tle word sub - dues him.
 they can - not win the day. The king - dom's ours for - ev - er!

